



Workshop Series: Enhancing laboratory diagnostic skills



Three separate one day practical courses for equine, cattle, and companion animal veterinarians.

Improve your confidence when using an in house analyser and get the most out of your lab. These three new style pathology workshops will improve the potential for getting to the crux of a clinical problem for veterinarians working in equine, dairy, production and companion animal practice.

Format

The one day workshops will be run over three consecutive days with each day concentrating on a different species. There will be a combination of seminars and hands on practical microscopy sessions.

Day 1 – The equine dedicated day will include the latest laboratory techniques and information used in general, performance, and reproduction equine practice.

Day 2 – The cattle dedicated day will include the latest laboratory techniques and information used in dairy cattle and beef cattle practice.

Day 3 – The companion animal dedicated day includes a practical session on basic cytology, sample preparation (solid tissue and fluid), and microscopic interpretation of preparations. The workshop will include the latest laboratory techniques and information used in general and specialist companion animal practice.

CPD points: Activities in this workshop can be recorded under either continuing veterinary education or collegial learning activity.

Tutors representing all three veterinary diagnostic laboratories in NZ

Sandra Forsyth, Jenni Donald, Dawn Seddon, Lisa Hulme-Moir, Roger Ellison, Isobel Gibson, Jon Meyer, Alan Julian, Alice Fraser, Mark Bestbier, and Rae Pearson

Biological Sciences: Ray Cursons

Equine specialists: Jenni Sonis (medicine) and Lee Morris (reproduction)

Companion animal specialist: Fiona Hollinshead (reproduction)

Tutors kindly sponsored by:



Dates:

Equine workshop | Tuesday 22 August 2017

Cattle workshop | Wednesday 23 August 2017

Companion animal workshop | Thursday 24 August 2017

Location: Waikato University, Hamilton

Prices (earlybird rates below apply until Tuesday 25 July 2017):

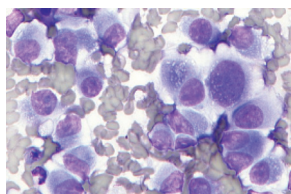
NZVA members:

One workshop \$495 **Two workshops** \$890 **All workshops** \$1,190

Non-members:

One workshop \$745 **Two workshops** \$1,340 **All workshops** \$1,780

Practice registration is available for NZVA members who work at the same clinic. Register for three days and send a different person each day. Email vetlearn@vets.org.nz for further details.



Proudly sponsored by



More events at www.nzva.org.nz/events | Brought to you by NZVA | VetLearn

13



Find out more and register online at

www.nzva.org.nz/diagnostic